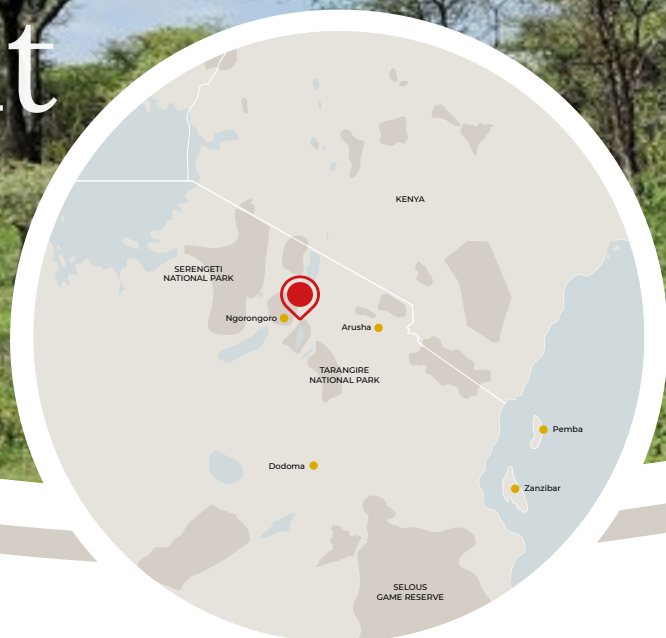


Africa Safari Manyara Escarpment



Embrace Nature's True Serenity

Perched on the dramatic escarpment cliff, Africa Safari Manyara Escarpment offers a breathtaking retreat where nature meets comfort. Wake up to the mesmerizing sounds of a nearby river, take in panoramic views of the vast landscape from the public areas, and immerse yourself in an authentic safari experience just minutes from Lake Manyara National Park. With 42 canvas 'safari cabin' tents, including Comfort, Luxury Glamping, Premium Glamping, and Family options, every guest is treated to a private and serene escape. The property features a restaurant, bar, spa, boutique, fitness tent, and an infinity swimming pool, all seamlessly blending into the surrounding wilderness under canvas.

Africa Safari Manyara Escarpment offers sweeping views and an unforgettable gateway to Tanzania's wildlife and culture.



Open all year round - 365 days - 24/7



AFRICA SAFARI

MANYARA ESCARPMENT

Where Nature Meets the Best Views

www.paradise-wilderness.com
info@paradise-wilderness.com



+255 699 065 829





LOCATION

Located on the Rift Valley Escarpment edge

Africa Safari Manyara Escarpment is located on the Mto wa Mbu escarpment edge, 5 kms from Lake Manyara National Park and 3 kms from Lake Manyara airstrip. A location ideal to explore Lake Manyara and Tarangire National Parks and/or Ngorongoro Crater. Also perfect as a stopover on your way to Serengeti National Park.

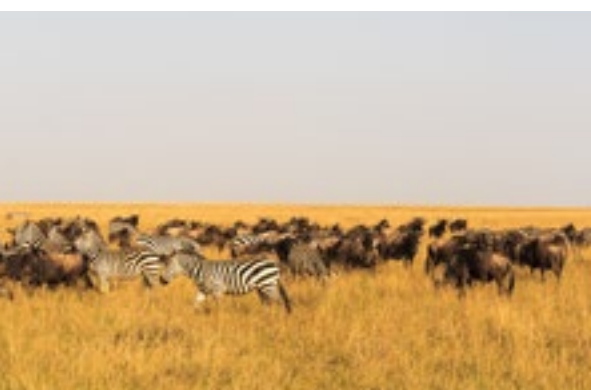
GPS: 3°21'47"S and 35°49'31" E



FACILITIES

Everything you need (and more)

- Reception area
- Bar and Restaurant
- Safari Comfort Accommodation
- Safari Comfort Family
- Safari Luxury Glamping
- Safari Premium Glamping
- Safari Tents with shared toilets and shower
- Infinity pool
- Spa & Wellness
- Campfire
- Gym
- Boutique
- Free Wi-Fi in reception, restaurant, and bar
- Water heated by solar energy
- Electricity with back-up generator
- 24 hr security
- Safari jeep with pop-up roof for hire (no self-drive) on request



PARK INFORMATION

What you should know

For entry to Lake Manyara National Park, TANAPA entry fees apply. These apply to both people and vehicles. Agents must pay these fees electronically online, whilst for private visitors Africa Safari Escarpment Lake Manyara can assist. Ngorongoro (both Crater and Conservation Area) and Tarangire National Parks have their own park entry/conservation fees, and these too are best applied for and paid in advance online.

| | Number of rooms | Guests per room | Bedroom size (sqm) | Bathroom size (sqm) | Balcony size (sqm) | Total room size (sqm) | King size bed | Sofa/Single bed | Bunk bed | Indoors seating area | Safe box | Pool towel | Mosquito net | Complimentary toiletries | Coffee/Tea making facilities | Drinking water | Charging points (Phone and camera) | Maximum guests per room |
|-------------------------|-----------------|-----------------|--------------------|---------------------|--------------------|-----------------------|---------------|-----------------|----------|----------------------|----------|------------|--------------|--------------------------|------------------------------|----------------|------------------------------------|-------------------------|
| Safari Comfort | 20 | 2 | 40 | 10 | 10 | 60 | 1 | | | | • | • | • | • | • | • | • | 2 |
| Safari Family Comfort | 2 | 2+(1+1)+(1+1) | 44 | 6 | 10 | 60 | 1 | | 2 | • | • | • | • | • | • | • | • | 6 |
| Safari Luxury Glamping | 12 | 2+1 | 40 | 10 | 10 | 60 | 1 | 1 | | • | • | • | • | • | • | • | | 3 |
| Safari Premium Glamping | 3 | 2+1 | 40 | 10 | 10 | 60 | 1 | 1 | | | • | • | • | • | • | • | • | 3 |
| Safari Tent | 5 | | | | | | | | | | | | | | | | | |

2: Double bed | 1: single bed | (1+1): Bunk bed

WHY GO THERE?

- ✓ Situated near Tanzania's top safari areas
- ✓ Unmatched location & exceptional value
- ✓ Ideally positioned for visits to Ngorongoro Crater, Lake Manyara N.P., and Tarangire N.P.
- ✓ Breathtaking views
- ✓ Open all year round
- ✓ Safari style with luxury comfort
- ✓ Short drive from Arusha
- ✓ Ideal for Birders



Safari Comfort Accommodation

Maximum occupancy
2 guests



Sleeping under canvas is always special and the feeling of being so close to nature gives an extra special dimension to your stay. The Safari Comfort accommodation has a king-size bed and the ensuite bathroom features a shower, toilet, and washbasin. Enjoy the sights and sounds of nature from your private terrace.

There are 20 units available.

- ✓ King-size bed (180 x 200) or twin beds (90 x 200)
- ✓ Fully equipped bathroom with shower
- ✓ Inside seating area
- ✓ Coffee and tea-making facilities
- ✓ Charging points for mobile phones and cameras
- ✓ Safety deposit box
- ✓ Quality mattress and bed linen
- ✓ Mosquito net
- ✓ Terrace
- ✓ Total room size 60 sqm



Safari Comfort Family

Maximum occupancy
6 guests



The Safari Comfort Family accommodations are also built under canvas, adding to the excitement of a safari holiday. This larger room accommodates 6 guests with one king-size bed and two bunk beds. The accommodation has an ensuite bathroom with a shower, toilet, and washbasin. The furnished terrace is the perfect spot for the whole family to gather and enjoy the stillness.

There are 2 units available.

- ✓ King-size bed (180 x 200) and two bunk beds (90 x 200)
- ✓ Fully equipped bathroom with shower
- ✓ Inside seating area
- ✓ Coffee and tea-making facilities
- ✓ Charging points for mobile phones and cameras
- ✓ Safety deposit box
- ✓ Quality mattress and bed linen
- ✓ Mosquito net
- ✓ Terrace
- ✓ Total room size 60 sqm



Safari Luxury Glamping

Maximum occupancy
3 guests



Enjoy the experience of sleeping in canvas accommodation, with all the luxuries needed for a comfortable stay, surrounded by the sounds of Lake Manyara's wildlife. Furnished with a king-size bed and a single bed, the bathroom includes a shower, toilet, and washbasin. The terrace is perfect for relaxing and reminiscing about the day's adventures.

There are 12 units available.

- ✓ King-size bed (180 x 200) and a single bed (90 x 200)
- ✓ Fully equipped bathroom with shower
- ✓ Inside seating area
- ✓ Coffee and tea-making facilities
- ✓ Charging points for mobile phones and cameras
- ✓ Safety deposit box
- ✓ Quality mattress and bed linen
- ✓ Mosquito net
- ✓ Terrace
- ✓ Total room size 60 sqm



Safari Premium Glamping

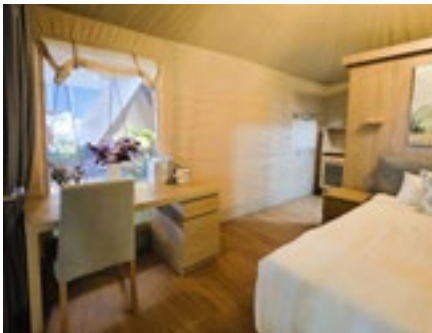
Maximum occupancy
3 guests



As the name suggests, this category of canvas accommodation offers a premium standard with refined furnishings and upscale ensuite facilities, delivering unmatched comfort and style in a natural setting. Furnished with a king-size bed and a single bed, the bathroom includes a shower, toilet, and washbasin. The terrace is an ideal spot to unwind and reflect on the day's experiences.

There are 3 units available.

- ✓ King-size bed (180 x 200) and a single bed (90 x 200)
- ✓ Fully equipped bathroom with shower
- ✓ Inside seating area
- ✓ Coffee and tea-making facilities
- ✓ Charging points for mobile phones and cameras
- ✓ Safety deposit box
- ✓ Quality mattress and bed linen
- ✓ Mosquito net
- ✓ Terrace
- ✓ Total room size 60 sqm



The pictures shown represent the style of the room once construction is finished and may not be an exact representation.

Safari Tent

Maximum occupancy
2 guests



Basic, but effective, the Safari Tents are the perfect low-cost opportunity to experience Lake Manyara. Furnished with two single beds, and a small outdoor seating area, this is the chance to get back to basics and enjoy the adventure. The tents are located near the restaurant, spa, and swimming pool.

- ✓ Shared toilet and (hot water) shower facilities
- ✓ Private location
- ✓ Very suitable for budget travellers, backpackers, and overland trucks

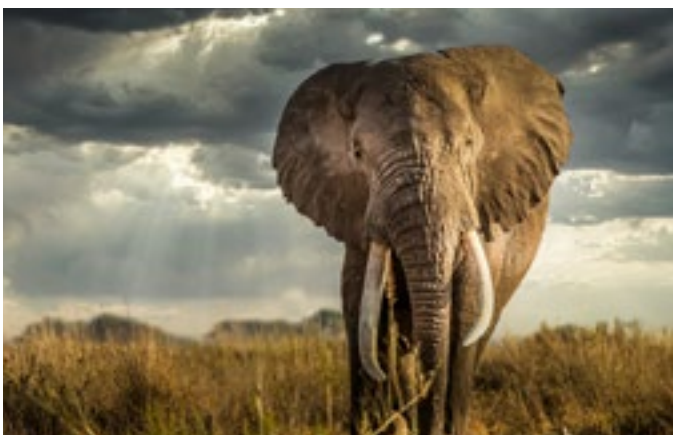
There are 5 units available.





Ngorongoro Crater

Nothing can prepare you for the breathtaking beauty of Ngorongoro Crater. Standing on the viewpoint and beholding the crater, the clouds floating around the crater rim with a cool, mountainous breeze in the air, there is no mistaking the divinity of Mother Nature. Ngorongoro Crater is a world heritage site, the world's largest intact volcanic caldera and is widely referred to as the 8th Wonder of the World. Due to its natural boundaries, there is an abundance of wildlife in the protected area which is home to the Big Five including the African black rhino, but you will also find hyenas, zebras and elephants to name but a few. The Ngorongoro Crater is an absolute must on any northern tour.



Tarangire National Park

Tarangire National Park is a fun and easy park to explore. The game is abundant and exposed because the park is more compact, and the terrain is open. In the dry season, the Tarangire River is the only permanent source of water. Tarangire National Park is 2850 square kilometres in size, making it the sixth largest park in Tanzania. It offers the highest concentration of wildlife after the Serengeti. Tarangire is known for its Baobab trees and the large herds of elephants that can be seen from close by. Other animals that can be seen are wildebeests, zebras, buffaloes, gazelles, rhinos, warthogs, impalas, pythons, lions, leopards and almost 500 species of birds.

Lake Manyara National Park

Lake Manyara National Park is an underrated gem amongst safari parks and offers extreme ecological diversity in a small area. The alkaline soda of the lake attracts an impressive number of birds that thrive on the water. More than 400 species have been identified, with a highlight being the thousands of flamingos that grace the shoreline. From the park's main entrance, the road winds through groundwater forests. Along the grassy banks of the lake, wildebeest, giraffe, zebra, and majestic buffalo can be observed grazing throughout the day. The park also offers excellent opportunities for hippo sightings. The mahogany and acacia trees are inhabited by the famous tree-climbing lions; with a bit of luck, you may see them lazing on a tree branch.





Highlights



Located in the best safari region of Tanzania



Variety of activities



Near to Lake Manyara airstrip



Ngorongoro Crater, Lake Manyara NP and Tarangire NP



Safari style with luxury comfort



Perfect for birders



Wi-Fi by satellite



Unique location and affordable



Infinity swimming pool



Breathtaking views

Activities

BIKING AT MTO WA MBU VILLAGE

A great way to get some exercise and explore rural life on two wheels! Enjoy a bike ride through the lively village, past local farms, schools and churches, combined with breathtaking views of the valley and lake.



ZIPLINE ADVENTURE

Get ready for an adrenaline boost at the Zipline Adventure park! Located at the foot of the Great Rift Valley, the course offers 4 exciting zips and 5 eco platforms. In a safety harness, you glide on a cable between the ancient Baobab trees while enjoying the breathtaking views of the Maasai land.



MAASAI BOMA TOUR AT MTO WA MBU

Maasai are easily recognised by their bright red blankets and colourful beadwork. These semi-nomadic people are warlike herdsman. Their lives revolve around gathering and grazing large herds of cows, as they believe that they are the guardians of all the cattle in the world. During your visit to their homestead, called a manyatta, the Maasai will teach you the Adumu (their world-famous jumping dance) and you will learn more about their beads and crafts.



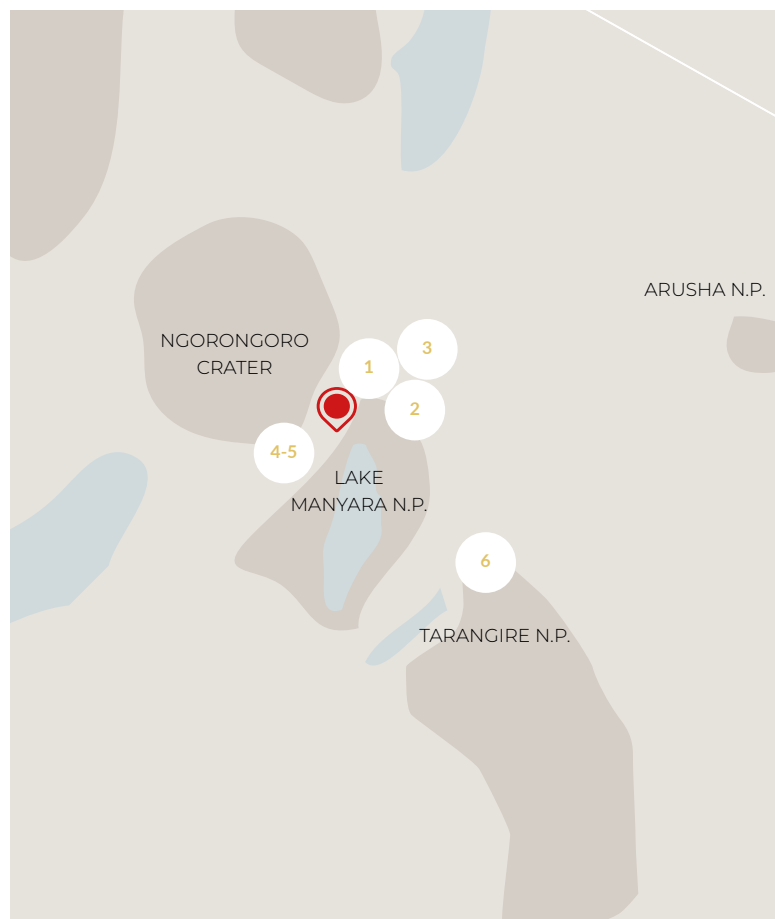
GUIDED BIRD WATCHING

- Bring your binoculars! Travel to the entrance of Lake Manyara National Park. This area is home to a prolific cross-section of Tanzania's bird species, making Lake Manyara one of the best birding hotspots in East Africa. You'll be greeted by the sights and sounds of vibrant bird species like the iconic pink flamingos, pelicans, storks, and herons. Expert guides will help you spot rare and migratory species, offering insights into their behaviours and the ecosystem they thrive in.



TREE TOP WALKWAY LAKE MANYARA

- Add some height to your safari in Lake Manyara National Park. Experience an adventure in the lush canopy of the forest. With this 370 metre aerial walk, you gradually rise from the ground to a total height of 18 metres, while viewing the surrounding nature and wildlife from an extraordinary perspective.



TARANGIRE BALLOON SAFARI

- An early departure from camp means that guests arrive in time to see the balloon inflate as the pilots blow the coloured fabric to life. Soar over the spectacular Tarangire National Park in search of the 'Giants of the African Wilderness': the elephants and the Baobab trees. The hot air balloon flight lasts for an hour.



Safari Jeep

A four-wheel drive safari jeep with a pop-up roof, including driver and fuel, is available for hire on request. Our driver guides are very knowledgeable and will ensure you have as much time as you need to ask questions, take pictures and enjoy the incredible landscape.



| Distance in km. | Africa Safari Arusha | Africa Safari Lake Natron | Africa Safari Maasai Boma, via Lake Natron | Africa Safari Maasai Boma, via Ikoma | Africa Safari Serengeti Ikoma | Africa Safari Serengeti Ikoma, via Lake Natron and Maasai Boma | Africa Safari Serengeti Kusini | Africa Safari South Serengeti | Africa Safari Karatu | Africa Safari Rift Valley | Africa Safari Selous |
|----------------------------------|----------------------|---------------------------|---|---|-------------------------------|--|--------------------------------|-------------------------------|----------------------|---------------------------|--|
| Africa Safari Manyara Escarpment | 124 | 120 | 250 | 337 | 227 | 360 | 185 | 145 | 32 | 125 | 916 |
| Reachable without overnight stop | YES | YES | NOT ADVISABLE. Overnight in Africa Safari Lake Natron | NOT ADVISABLE. Overnight in Africa Safari Serengeti Ikoma | YES | NOT ADVISABLE. Overnight in Africa Safari Lake Natron, Africa Safari Maasai Boma | YES | YES | YES | YES | NO. Overnight in Africa Safari Arusha, Dar Es Salaam |

DEVELOPMENTS

Lake Manyara drains water from a few permanent and seasonal rivers from the Karatu Highlands, the Ngorongoro, Mbulu and the Nou Forest. The lake significantly influences local land use practices and serves as a magnet for wildlife. It sustains the Tarangire-Manyara Ecosystem in Northern Tanzania by being one of the two catchment basins and is therefore very important for conservation.



Most common wildlife in the area



Elephant
Hyena
Impala
Lion
Leopard



Buffalo
Wildebeest
Giraffe
Zebra



Lesser Flamingo
Glossy Ibis
Martial eagle
Black heron
Silvery-cheeked hornbill

A massive variety of birds and birds of prey

| MONTHS | Jan | Feb | Mar | Apr | May | Jun | Jul | Aug | Sep | Oct | Nov | Dec |
|-----------------|-----|-----|-----|-----|-----|-----|-----|-----|-----|-----|-----|-----|
| Game drives | • | • | ✱ | ✱ | ✱ | • | 7 | 7 | 7 | 7 | • | • |
| Activities | • | • | • | • | • | • | • | • | • | • | • | • |
| Migratory birds | • | • | • | • | | | | | | • | • | • |
| Dry season | | | | | | • | • | • | • | | | |
| Green season | | | | • | • | • | | | | 4 | 4 | |

7 Mara area ✱ Subject to weather 4 Half month conditions

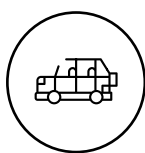


Airstrip / Airport

-
Nearest airstrip - Lake Manyara
airstrip - 3 km / 15 minutes driving
by vehicle

.....
Nearest domestic airport - Arusha
Airport (ARK) - 115 km / 2 driving
hrs by vehicle

.....
International airport - Kilimanjaro
Airport (JRO) - 173 km / 3,3 driving
hrs by vehicle



From Africa Safari Manyara Escarpment to...

-
Serengeti National Park Nabaa Hill
entrance - 147 km

.....
Ngorongoro entrance
gate - 76 km

.....
Lake Manyara entrance
gate - 450 mtrs

.....
Tarangire entrance
gate - 68 km



Good to know

-
Altitude: 1260 mtr
Day time temp: +/- 30°C
Night time temp: +/- 15°C
Green season: March-May

.....
ACCOMMODATION
Safari Comfort Accom. (20)
Safari Comfort Family (2)
Safari Luxury Glamping (12)
Safari Premium Glamping (3)
Safari Tent (5)

.....
MEAL PLAN
Bed and breakfast
Half board
Full board

.....
CREDIT CARD - CURRENCY
Master card / Visa card TZS,
USD, and Euro



Other accommodations in the Paradise & Wilderness group



TANZANIA

NORTHERN CIRCUIT:

1. Africa Safari Arusha
2. Africa Safari Lake Natron
3. Africa Safari Maasai Boma
4. Africa Safari Serengeti Ikoma
5. Africa Safari Serengeti Kusini
6. Africa Safari South Serengeti
7. Africa Safari Karatu
8. Africa Safari Manyara Escarpment
9. Africa Safari Manyara Migombani

10. Africa Safari Lake Manyara

11. Africa Safari Rift Valley
12. Africa Safari Tarangire (*)
13. Africa Safari Kilimanjaro Airport (*)

SOUTHERN TANZANIA

14. Africa Safari Saadani
15. Africa Safari Selous
16. Africa Safari Nyerere
17. Africa Safari Tagalala Hot Springs (*)

(*) Opening soon

ZANZIBAR/PEMBA

1. Reef & Beach Resort ★★★★★
2. Paradise Beach Resort ★★★★★
3. Zanzibar Bay Resort ★★★★★
4. Dream of Zanzibar ★★★★★
5. Shaba Boutique Hotel ★★★★★
6. Corals of Zanzibar (*) ★★★★★
7. Paradise Island (*) ★★★★★
8. Pemba Farm Estate (*) ★★★★★
9. Mkoani Guesthouse (*)

(*) Opening soon



AFRICA SAFARI

MANYARA ESCARPMENT

Where Nature Meets the Best Views

www.paradise-wilderness.com
info@paradise-wilderness.com

+255 699 065 829



More
contact
info



Website
Manyara
Escarpment



Photo
Gallery



Price
List

